

# AUTOMOTIVE CABLE

## PVC BATTERY / WELDING CABLES

Single insulated extra flexible welding/battery cables designed for use in tough working environments.

Resistant to petrol, lubricating oils and diluted acids.  
Plain copper conductors - PVC insulated -30oC to +70oC.



PART NO.	X SECTION MM <sup>2</sup>	CONDUCTOR SPEC	NOMINAL CURRENT	SHEATH COLOURS.	ROLL LENGTHS
PVC16	16	206/0.30	110 amp	BLACK RED	10 30 100
PVC20	20	266/0.30	135 amp	BLACK RED	10 30 100
PVC25	25	322/0.30	170 amp	BLACK RED	10 30 100
PVC35	35	451/0.30	240 amp	BLACK RED	10 30 100
PVC40	40	539/0.30	300 amp	BLACK RED	10 30 50
PVC50	50	640/0.30	345 amp	BLACK RED	10 30 50
PVC60	60	805/0.30	415 amp	BLACK RED	10 30 50
PVC70	70	905/0.30	485 amp	BLACK RED	10 30 50
PVC95	95	684/0.40	500 amp	BLACK RED	10 50
PVC120	120	888/0.40	600 amp	BLACK RED	10 50
PVC150	150	1184/0.40	700 amp	BLACK RED	10 50

## STEREO SPEAKER TWIN CABLES

Twin flat figure of 8 cables suitable for wiring speaker systems in vehicles and in the home.

Plain copper conductors - PVC insulated.



PART NO.	X SECTION MM <sup>2</sup>	CONDUCTOR SPEC	NOMINAL CURRENT	COLOURS	ROLL LENGTHS
550	2 x 0.38	2 X 12/0.20	2	BLACK - BLACK/WHITE	30 100 500
551	2 x 0.5	2 X 16/0.20	3	BLACK - BLACK/WHITE	30 100 500
552	2 x 0.75	2 X 24/0.20	6	BLACK - BLACK/RED	30 100 500

# AUTOMOTIVE CABLE

PART NO.	X - SECTION	CONDUCTOR SPEC	NOM CURRENT	ROLLS
TW0.75	0.75 mm	24/0.20	14.0 amp	50 100 500
TW1.0	1.0 mm	32/0.20	16.5 amp	50 100 500
TW2.0	2.0 mm	28/0.30	25.0 amp	50 100 500
TW3.0	3.0 mm	44/0.30	33.0 amp	30 100 300
TW4.0	4.0 mm	56/0.30	39.0 amp	30 100 300
TW4.5	4.5 mm	65/0.30	42.0 amp	30 100 300
TW6.0	6.0 mm	84/0.30	50.0 amp	30 100 300
TW7.0	7.0 mm	97/0.30	57.0 amp	30 100
TW8.5	8.5 mm	120/0.30	63.0 amp	30 100
TW10.0	10.0 mm	80/0.40	70.0 amp	30 100
TW16.0	16.0 mm	126/0.40	110.0 amp	10 30 100
TW02/06	2 x 0.5 mm	2 x 16/0.20	11.0 amp	30 100
TW02/01	2 x 1.0 mm	2 x 32/0.20	16.5 amp	30 100 500
TW02/02	2 x 2.0 mm	2 x 28/0.30	25.0 amp	30 50 100
TW02/08	2 x 3.0 mm	2 x 44/0.30	33.0 amp	30 100
TW02/09	2 x 4.5 mm	2 x 65/0.30	42.0 amp	30 100
TW03/03	3 x 0.75 mm	3 x 24/0.20	14.0 amp	30 100
TW03/01	3 x 1.0 mm	3 x 32/0.20	16.5 amp	30 100
TW03/04	3 x 1.5 mm	3 x 21/0.30	21.0 amp	30 100
TW03/02	3 x 2.0 mm	3 x 28/0.30	25.0 amp	30 100
TW04/02	4 x 0.75 mm	4 x 24/0.20	14.0 amp	30 100
TW04/03	4 x 1.5 mm	4 x 21/0.30	21.0 amp	30 100
TW05/02	5 x 0.75 mm	5 x 24/0.20	14.0 amp	30 100
TW05/01	5 x 1.0 mm	5 x 32/0.20	16.5 amp	30 100
TW05/03	4x1 & 1x2	4 x 32/0.20 1 x 28/0.30	16.5 amp 25.0 amp	30 100
TW07/03	7 x 0.5 mm	7 x 16/0.20	11.0 amp	30 100
TW07/01	7 x 0.75 mm	7 x 24/0.20	14.0 amp	30 100
TW07/02	6x1 & 1x2	6 x 32/0.20 1 x 28/0.30	16.5 amp 25.0 amp	30 100
TW07/07	6x1.5 & 1x2.5	4 x 21/0.30 1 x 35/0.30	21.0 amp 29.0 amp	30 100
TW08/01	7x1 & 1x2	7 x 32/0.20 1 x 28/0.30	16.5 amp 25.0 amp	50 100
TW10/01	9x1 & 1x2	9 x 32/0.20 1 x 28/0.30	16.5 amp 25.0 amp	50 100
TW13/01	12x1.5 & 1x2.5	12 x 21/0.30 1 x 35/0.30	21.0 amp 29.0 amp	50

# CABLE FIXING & MARKING



## Cable Ties - Specification

High quality virgin nylon 6.6  
 Flame resistant to ul94v2  
 Tensile strength in accordance with mil 23190e  
 For continuous use -40°C to +85°C

PART NO.	LENGTH MM	WIDTH MM	MAX DIAMETER MM	MAX TENSILE STRENGTH KG	PACK SIZE
HFC100	100	2.5	18	8	100
HFC120	120	2.5	24	22	100
HFC140	140	3.6	33	18	100
HFC200	200	4.8	50	22	100
HFC300	300	4.8	76	22	100
HFC300H	300	7.6	76	55	100
HFC300SIL	300	4.8	76	22	100
HFC365	370	4.8	102	22	100
HFC370	370	7.6	102	22	100
HFC530	530	4.8	140	22	100
HFC580	580	12.7	152	113	100

## STEEL CABLE TIES

- Self locking design
- Smooth internal surface suitable for all types of cable insulation
- Del norske veritas type approval number e-66729
- ul listed file number e227552



PART NO.	LENGTH MM	WIDTH MM	MAX DIAMETER	MIN TENSILE STRENGTH N	PACK SIZE
SST2316	201	4.6	50	445N	100
SST4316	360	4.6	100	445N	100
SST4316H	360	7.6	100	1112N	100

## AUTOMOTIVE CABLE

# CABLE FIXING



## 250 Coloured cable ties - RAIN160 160mm x 2.5mm

50 x Red                      50 x Green                      50 x Yellow  
50 x Blue                      50 x Orange



## Tensioning tool - TT20

Designed for cable tie width 2.2mm – 4.8mm  
This tool automatically cuts the excess off the cable tie once the correct tension is achieved.



## Adhesive backed cable tie base

4 Side entry                      100 per pack  
Screw mounting hole (On HFC2/4)  
**HFC1/4** - 20MM<sup>2</sup> (MAX TIE WIDTH 4.0mm)  
**HFC 2/4** - 28MM<sup>2</sup> (MAX TIE WIDTH 5.0mm)



## Aluminium cable mounting clips

Self adhesive base.                      50 per pack  
**SC1.50**                      6mm Diameter                      16 x 6 mm  
**SC2.50**                      9.5mm Diameter                      20 x 15 mm

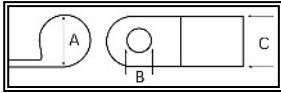


## Nylon cable mounting clips

Self adhesive base.  
**MCA1N.50**                      3.8mm Diameter                      16 X 16 mm  
**MCA2N.50**                      7.7mm Diameter                      26 X 26 mm  
**MCA3N.50**                      12mm Diameter                      32 X 32 mm

## P CLIPS

Black rubber-covered aluminium  
P clips for fixing cables, conduit, etc.  
Rubber covered to provide protection  
against vibration and chafing.

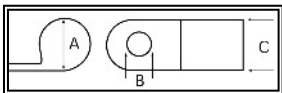


PART NO.	DIM A MM	DIM B MM	DIM C MM
PA50.10	4.8	5.2	12.7
PA51.10	6.4	5.2	12.7
PA52.10	7.9	5.2	13.7
PA53.10	9.5	5.2	14.7
PA54.10	11.1	5.2	15.7
PA55.10	12.7	5.2	16.7
PA56.10	14.3	5.2	17.7
PA57.10	15.9	5.2	18.7
PA58.10	17.5	5.2	19.7
PA59.10	19.1	5.2	20.7
PA60.10	22.2	5.2	21.7
PA61.10	25.4	5.2	22.7

## Nylon P clips

For fixing cables, conduit, etc.

- available in black

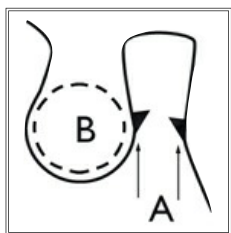


PART	DIA A MM	DIA B MM	DIA C MM	PACK QTY
PC10	3.2	5.2	9.8	50
PC11	4.5	5.2	9.8	50
PC12	6.4	5.2	9.8	50
PC13	7.8	5.2	9.8	50
PC14	9.3	5.2	9.8	50
PC15	12.5	5.4	12.8	50
PC16	13.7	5.4	12.8	25
PC17	19	5.4	12.8	25
PC18	22	5.4	12.8	25
PC19	28	5.4	12.8	25

## Steel Clips

For fixing cables, conduit, etc.

- available in packs of 25



PART NO.	DIA A MM	DIA B MM
CC20	4.0 - 7.0	6.0 - 7.0
CC21	4.0 - 7.0	8.0 - 9.0
CC22	4.0 - 7.0	10.0 - 11.0
CC23	4.0 - 7.0	12.0 - 14.0
CC30	2.0 - 4.0	6.0 - 7.0
CC31	2.0 - 4.0	8.0 - 9.0
CC32	2.0 - 4.0	10.0 - 11.0
CC33	2.0 - 4.0	12.0 - 14.0

# CONDUIT & ACCESSORIES

## Nylon Convolute Sleeving

Nylon convolute sleeving suitable for bundling of wires and protection against abrasion.

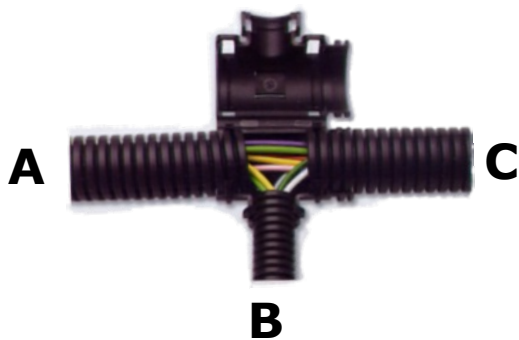
Material - nylon 6

Resistant to petrol oil & water



PART NO. SPLIT	PART NO. UNSPLIT	NOMINAL WIDTH	INSIDE DIAM MM	OUTSIDE DIAM MM	ROLL LENGTH
1213007	1212079	8	6.7	10	50M
1213008	1212850	8.5	8.5	11.5	50M
1213010	1210010	10	10.1	13.2	50M
1213013	1212133	13	13	16	50M
1213014	1212141	14	14.5	18.5	50M
1213017	1212176	17	17	21.2	50M
1213022	1212222	22	21.6	25.6	50M
1213023	1212230	23	23.5	28.5	50M
1213026	1212260	26	26.1	31.2	25M
1213029	1212290	29	29.4	34.5	25M
1213037	1212790	37	36.7	42.2	25M
1213050	1212508	50	48.1	54	25M

## External Hinged T Pieces



PART NO.	CONDUIT		OUTLET	SIZE
	A	B	C	
9806138	10	10	10	10
9806118	13	8.5	13	13
9806101	13	10	13	13
9806115	13	13	13	13
9806120	17	8.5	17	17
9806107	17	10	13	13
9806136	17	10	17	17
9806166	17	13	13	13
9806196	17	17	17	17
9806149	22	8.2	22	22
9806143	22	10	10	10
9806121	22	10	22	22
9806108	22	13	22	22
9806103	22	17	13	13
9806102	22	22	22	22

**Connection Glands** - For feeding UNSPLIT convolute tubing through bulkheads, junction boxes etc.

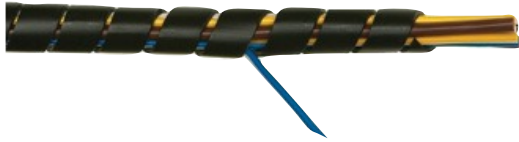


ABK10-M16	FITS	<b>NW10</b>	Tubing
ABK13-M16	FITS	<b>NW13</b>	Tubing
ABK17-M20	FITS	<b>NW17</b>	Tubing
ABK22-M25	FITS	<b>NW22</b>	Tubing
ABK29-M32	FITS	<b>NW29</b>	Tubing

**AUTOMOTIVE CABLE**

# SPIRAL WRAP

## Spiral Wrap



Spiral binding provides a neat and quick method of protecting harnesses & wiring looms against abrasion. once fitted it can be adjusted or reused.

SB2B.25 - 6.4mm Diameter      25M Roll  
SB3B.25 - 12.7mm Diameter      25M Roll

# HEATSHRINK

## Standard Heat Shrink



**2:1 Ratio in mini boxes**

**Available in black & red.**

**Shrink temperature is 90 degrees C**

PART NO.	PRE-SHRINK DIAM MM	SHRUNK DIAM MM	ROLL LENGTH
HSMB12	1.2	0.6	20
HSMB16	1.6	0.8	17
HSMB24	2.4	1.2	15
HSMB32	3.4	1.6	15
HSMB48	4.8	2.4	12
HSMB64	6.4	3.2	12
HSMB95	9.5	4.7	8
HSMB127	12.7	6.4	8
HSMB191	19.1	9.5	5
HSMB254	25.4	12.7	5

## Adhesive Lined Heat Shrink



**3:1 Ratio**

**Available in black only**

**Shrink temperature is 90 degrees C**

PART NO.	PRE-SHRINK DIAM MM	SHRUNK DIAM MM	ROLL LENGTH
HSDW 3-3	3	1	1.2 M
HSDW 3-4.8	4.8	1.6	1.2 M
HSDW 3-6	6	2	1.2 M
HSDW 3-9	9	3	1.2 M
HSDW 3-12	12	4	1.2 M
HSDW 3-18	18	6	1.2 M
HSDW 3-24	24	8	1.2 M
HSDW 3-39	39	13	1.2 M



### Interlocking Numbered Cable Markers

**PA-1003**

H:5.5mm x W:4.2mm Text size 2.6mm.

Confirms to IEC 60062 Colour referencing marking system

Black	0	Green	5
Brown	1	Blue	6
Red	2	Violet	7
Orange	3	Grey	8
Yellow	4	White	9



### Superflex Braided Cable Sheathing

5-10mm - **SUP6**

8-16mm - **SUP10**

15-27mm - **SUP20**



### Heat-Reflective Adhesive Tape

**0-557-38**

Aluminium/Fibreglass, 37mm x 4.5 metre roll.

Protects cables and looms and pipes against abrasion and heat up to 815°C,

## COILED CABLES



### Retractable 2 Core Cable

**0-601-06**

Rated at 6 amps, 12 volts for continuous use.

### Retractable 3 Core Cable

3 x 0.75mm<sup>2</sup> - 3 metre

0-733-01

3 x 0.75mm<sup>2</sup> - 6 metre

0-733-00

### Retractable 5 Core Cable

5 x 0.75mm<sup>2</sup> - 3 metre

0-715-01

5 x 0.75mm<sup>2</sup> - 6 metre

0-715-00